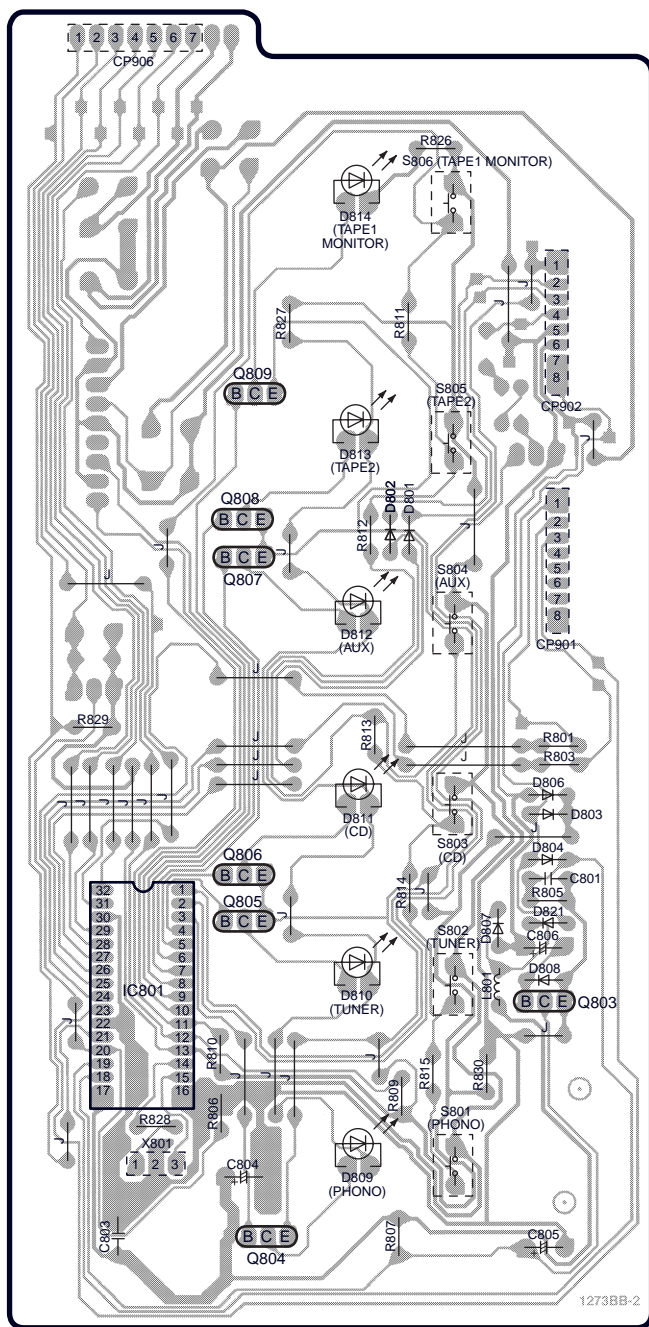
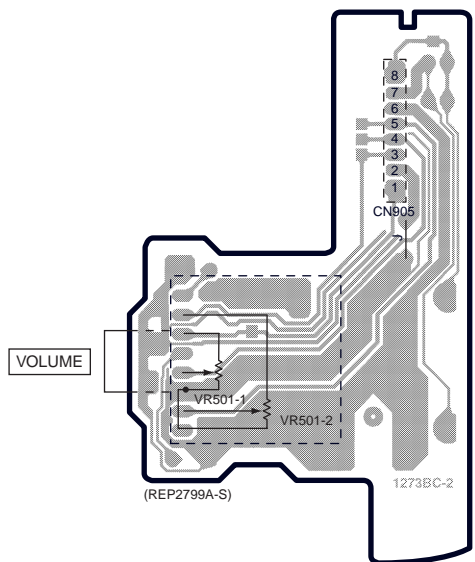


A OPERATION P.C.B.



B VOLUME P.C.B.

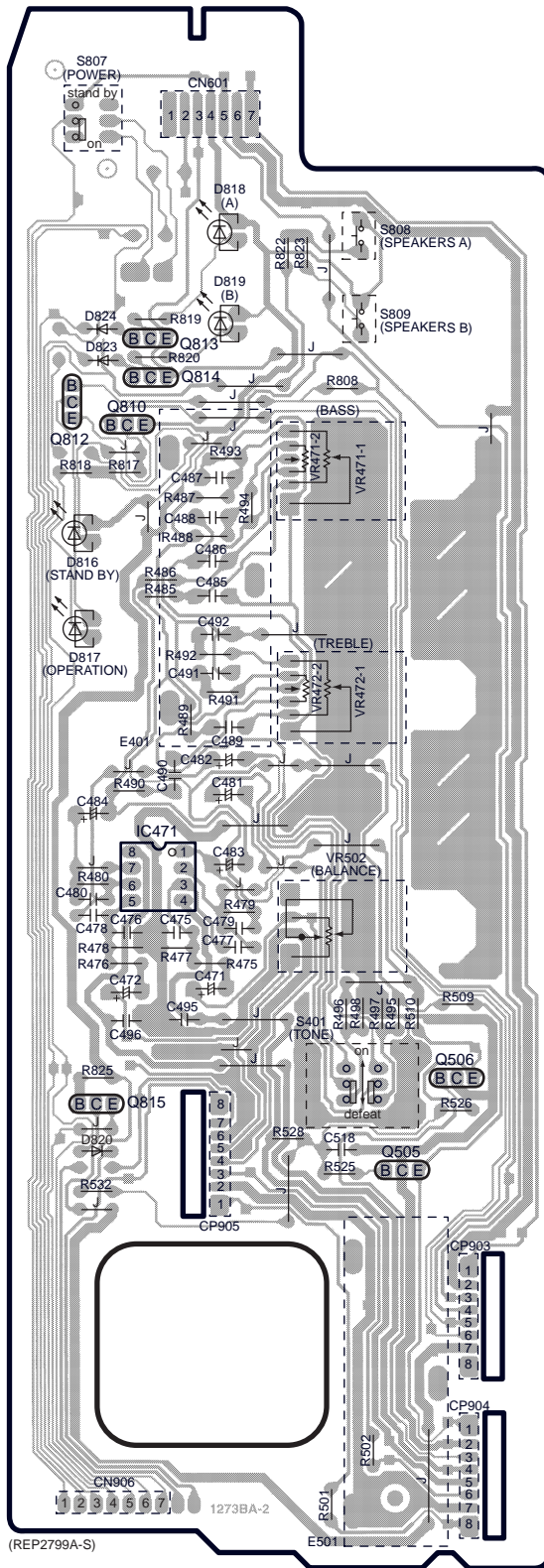


ELECTRICAL PARTS LOCATION

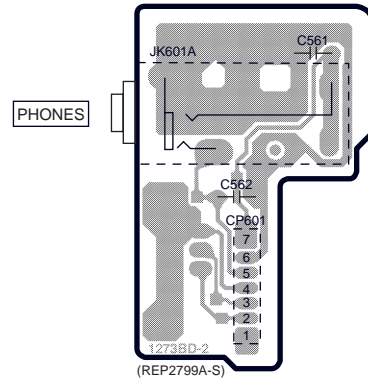
Ref. No.	Lo. No.	Ref. No.	Lo. No.
A OPERATION P.C.B.			
IC801	6A	S805	3C
Q803	6C	S806	2C
Q804	7B	CP901	4C
Q805	6B	CP902	3C
Q806	5B	CP906	2B
Q807	4B	R801	5C
Q808	4B	R803	5C
Q809	3B	R805	5C
D801	4C	R806	6B
D802	4C	R807	7C
D803	5C	R809	6C
D804	5C	R810	6B
D806	5C	R811	3C
D807	6C	R812	4C
D808	6C	R813	5C
D809	7B	R814	5C
D810	6B	R815	6C
D811	5B	R826	2C
D812	4B	R827	3B
D813	3B	R828	6B
D814	2B	R829	5A
D821	6C	R830	6C
L801	6C	C801	5C
X801	7B	C803	7A
S801	7C	C804	7B
S802	6C	C805	7C
S803	5C	C806	6C
S804	4C		
B VOLUME P.C.B.			
VR501-1	3E	CN905	2F
VR501-2	3E		

Note: This printed circuit board diagram may be modified at any time with the development of new technology.

C TONE AMP P.C.B.



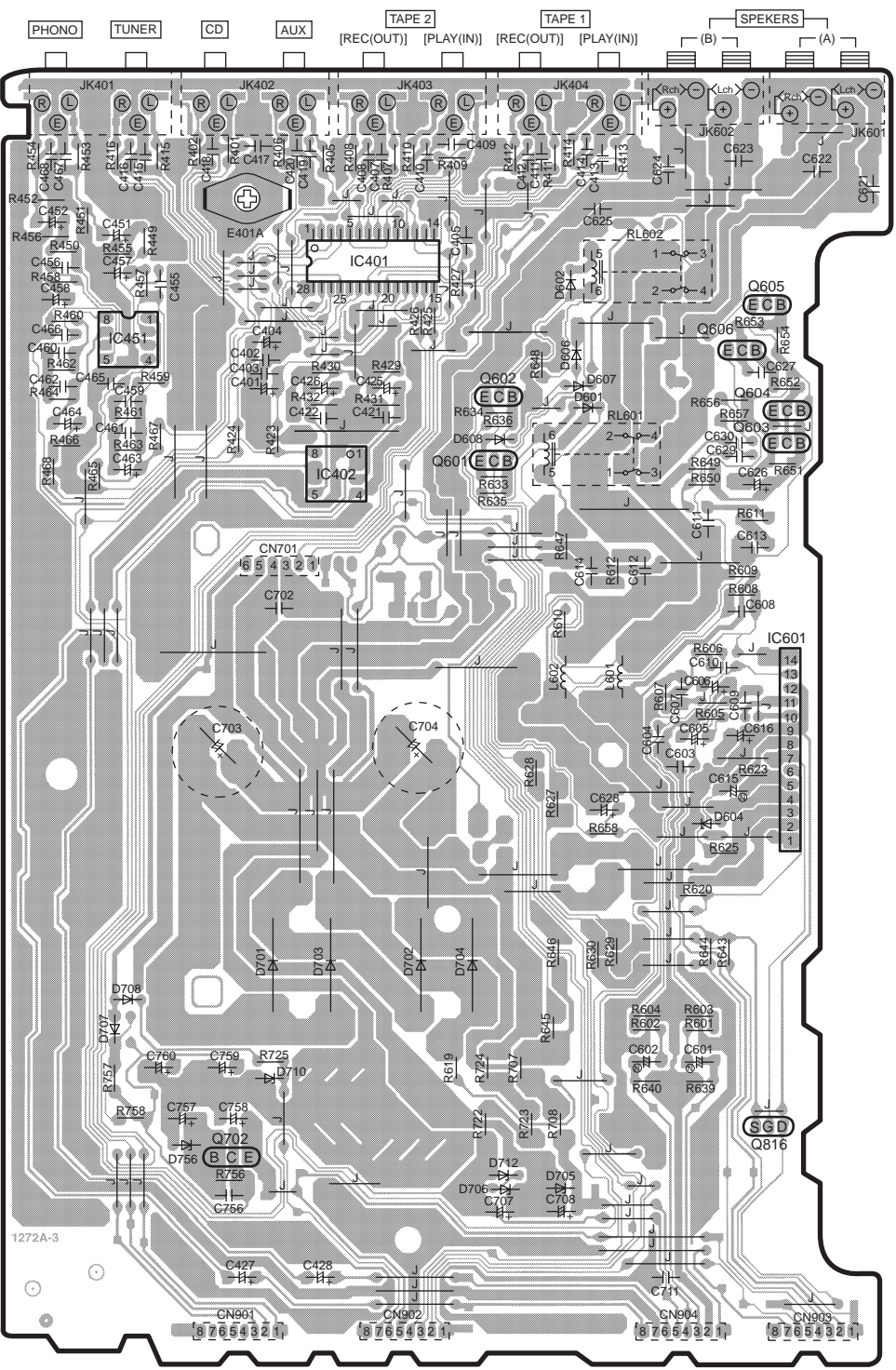
D HEADPHONES JACK P.C.B.



ELECTRICAL PARTS LOCATION

Ref. No.	Lo. No.	Ref. No.	Lo. No.
C TONE AMP P.C.B.			
IC471	5B	R493	3B
Q505	7C	R494	3B
Q506	6C	R495	6C
Q810	3B	R496	6C
Q812	3B	R497	6C
Q813	3B	R498	6C
Q814	3B	R501	8C
Q815	6B	R502	8C
D816	4B	R509	6C
D817	4B	R510	6C
D818	2B	R525	7C
D819	3B	R526	6C
D820	6B	R528	6C
D823	3B	R532	7B
D824	3B	R808	3C
VR471-1	3C	R817	3B
VR471-2	3C	R818	3B
VR472-1	4C	R819	3B
VR472-2	4C	R820	3B
VR502	5C	R822	2C
S401	6C	R823	2C
S807	2B	R825	6B
S808	2C	C471	6B
S809	3C	C472	6B
CN601	2B	C475	5B
CN906	8B	C476	5B
E401	4B	C477	5B
E501	7C	C478	5B
CP903	7C	C479	5B
CP904	8C	C480	5B
CP905	6B	C481	5B
R475	6B	C482	5B
R476	6B	C483	5B
R477	6B	C484	5B
R478	6B	C485	4B
R479	5B	C486	4B
R480	5B	C487	3B
R485	4B	C488	4B
R486	4B	C489	5B
R487	3B	C490	5B
R488	4B	C491	4B
R489	4B	C492	4B
R490	5B	C495	6B
R491	4B	C496	6B
R492	4B	C518	6C
D HEADPHONES JACK P.C.B.			
JK601A	2E	C561	2F
CP601	3E	C562	2E

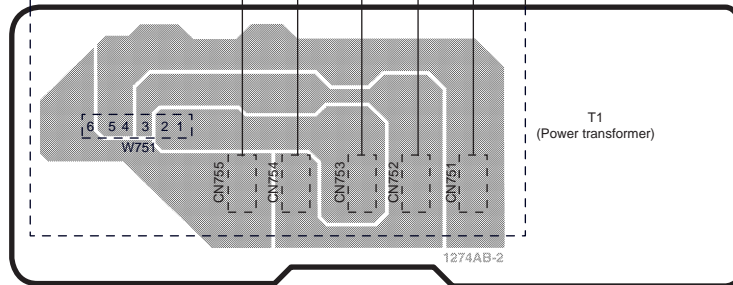
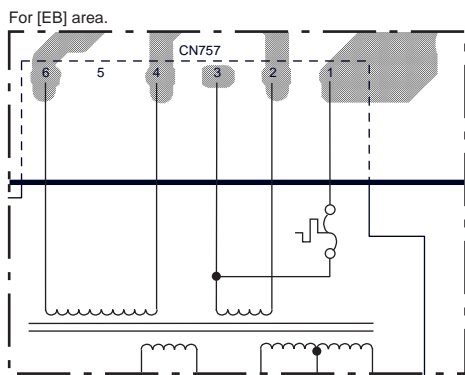
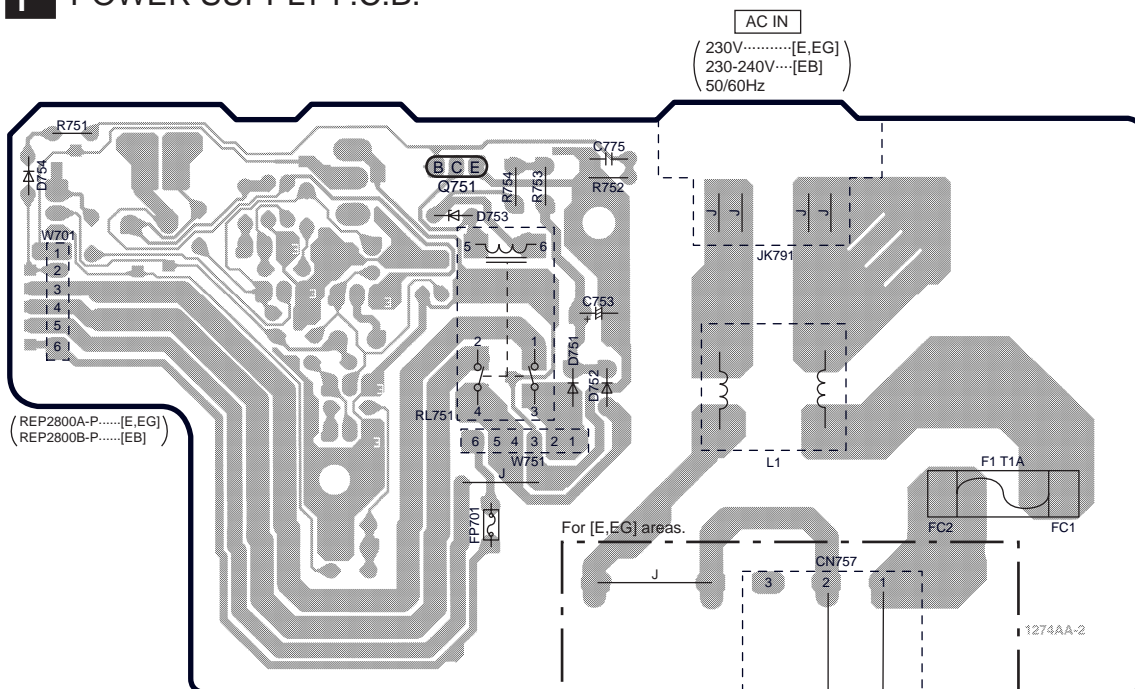
E MAIN P.C.B.



ELECTRICAL PARTS LOCATION

Ref. No.	Lo. No.	Ref. No.	Lo. No.	Ref. No.	Lo. No.
IC401	3C	R455	2A	C408	2B
IC402	4B	R456	2A	C409	2C
IC451	3A	R457	3A	C410	2C
IC601	5D	R458	3A	C411	2C
Q601	4C	R459	3A	C412	2C
Q602	3C	R460	3A	C413	2D
Q603	3D	R461	3A	C414	2D
Q604	3D	R462	3A	C415	2A
Q605	3D	R463	3A	C416	2A
Q606	3D	R464	3A	C417	2B
Q702	7B	R465	4A	C418	2B
Q816	7D	R466	3A	C419	2B
D601	3D	R467	3A	C420	2B
D602	3C	R468	4A	C421	3C
D604	5D	R601	6D	C422	3B
D606	3C	R602	6D	C425	3C
D607	3C	R603	6D	C426	3B
D608	3C	R604	6D	C427	7B
D701	6B	R605	5D	C428	7B
D702	6C	R606	4D	C451	2A
D703	6B	R607	5D	C452	2A
D704	6C	R608	4D	C455	3A
D705	7C	R609	4D	C456	3A
D706	7C	R610	4C	C457	3A
D707	6A	R611	4D	C458	3A
D708	6A	R612	4D	C459	3A
D710	6B	R619	6C	C460	3A
D712	7C	R620	6D	C461	3A
D756	7B	R623	5D	C462	3A
L601	5D	R625	5D	C463	4A
L602	5C	R627	5C	C464	3A
CN701	4B	R628	5C	C465	3A
CN901	8B	R629	6D	C466	3A
CN902	8C	R630	6D	C467	2A
CN903	8E	R633	4C	C468	2A
CN904	8D	R634	3C	C601	6D
JK401	2A	R635	4C	C602	6D
JK402	2B	R636	3C	C603	5D
JK403	2C	R639	6D	C604	5D
JK404	2C	R640	6D	C605	5D
JK601	2E	R643	6D	C606	5D
JK602	2D	R644	6D	C607	5D
E401A	2B	R645	6C	C608	4D
R401	2B	R646	6C	C609	5D
R402	2B	R647	4C	C610	4D
R405	2B	R648	3C	C611	4D
R406	2B	R649	4D	C612	4D
R407	2C	R650	4D	C613	4D
R408	2B	R651	4D	C614	4D
R409	2C	R652	3D	C615	5D
R410	2C	R653	3D	C616	5D
R411	2C	R654	3D	C621	2E
R412	2C	R656	3D	C622	2E
R413	2D	R657	3D	C623	2D
R414	2C	R658	5D	C624	2D
R415	2A	R707	6C	C625	2D
R416	2A	R708	7C	C626	4D
R423	3B	R722	7C	C627	3D
R424	3B	R723	7C	C628	5D
R425	3C	R724	6C	C629	3D
R426	3C	R725	6B	C630	3D
R427	3C	R756	7B	C702	4B
R429	3C	R757	7A	C703	5B
R430	3B	R758	7A	C704	5C
R431	3C	RL601	3D	C707	7C
R432	3B	RL602	3D	C708	7C
R449	2A	C401	3B	C711	7D
R450	2A	C402	3B	C756	7B
R451	2A	C403	3B	C757	7B
R452	2A	C404	3B	C758	7B
R453	2A	C405	2C	C759	6B
R454	2A	C407	2C	C760	6A

F POWER SUPPLY P.C.B.



G POWER TRANSFORMER P.C.B. (REP2800A-P.....[E,EG] REP2800B-P.....[EB])

ELECTRICAL PARTS LOCATION

Ref. No.	Lo. No.	Ref. No.	Lo. No.	Ref. No.	Lo. No.	Ref. No.	Lo. No.	Ref. No.	Lo. No.	Ref. No.	Lo. No.
F POWER SUPPLY P.C.B.											
Q751	2C	D754	2A	JK791	2D	W701	2A	R753	2C	C775	2D
D751	3D	L1	3D	FC1	3F	W751	3C	R754	2C		
D752	3D	F1	3E	FC2	3E	R751	1A	RL751	3C		
D753	2C	CN757	3E/5B	FP701	3C	R752	2D	C753	2D		
G POWER TRANSFORMER P.C.B.											
T1	6F	CN752	6E	CN754	6D	W751	6D				
CN751	6E	CN753	6E	CN755	6D						